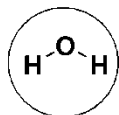
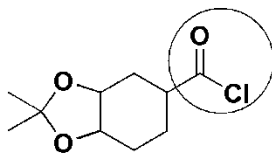


PS #3 Practice Questions – Nucleophiles and Electrophiles in the Synthesis of Amides and Esters

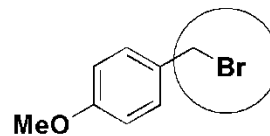
Part I. Circle the most nucleophilic or electrophilic centre in the following molecules and state whether the reactive site you have chosen is nucleophilic or electrophilic.



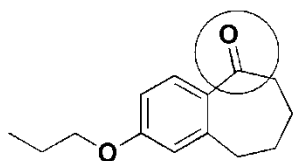
Nucleophile



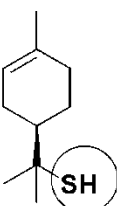
Electrophile



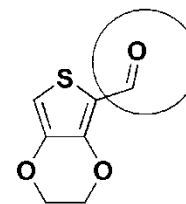
Electrophile



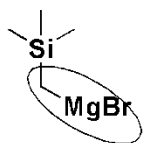
Electrophile



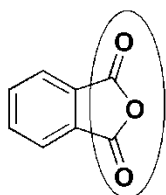
Nucleophile



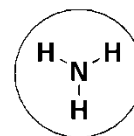
Electrophile



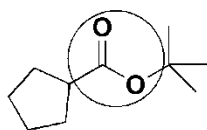
Nucleophile



Electrophile



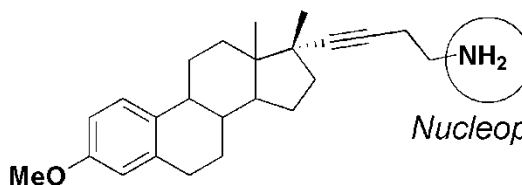
Nucleophile



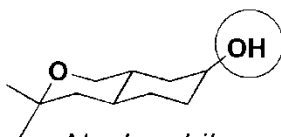
Electrophile



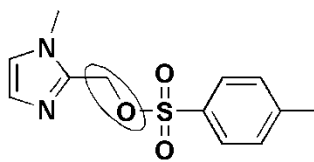
Nucleophile



Nucleophile

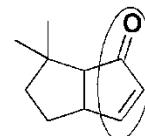


Nucleophile



(Tos)

Electrophile



Electrophile

Part II. Fill in the boxes with the appropriate product or reagent.

