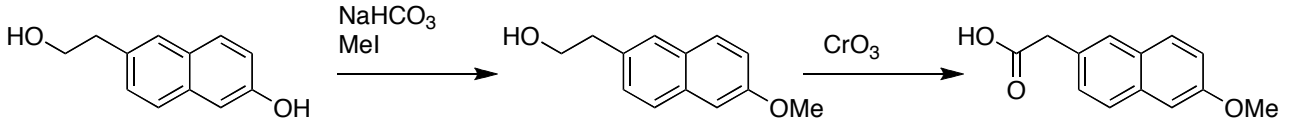
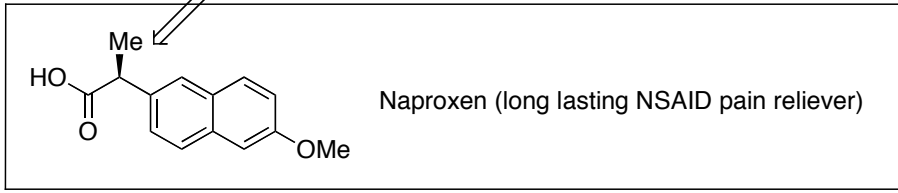


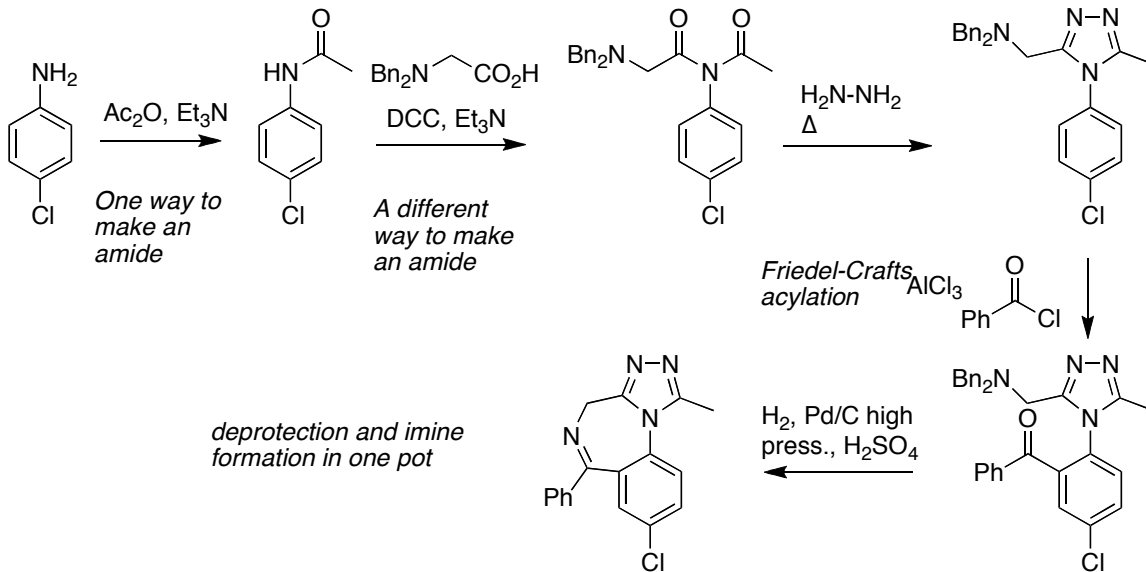
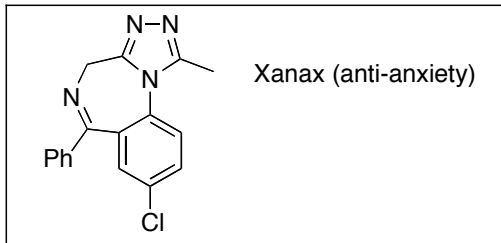
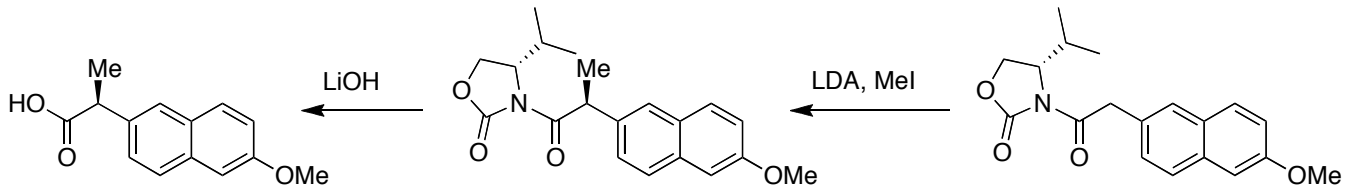
α -position of a carbonyl = easily installed using Evans' methodology

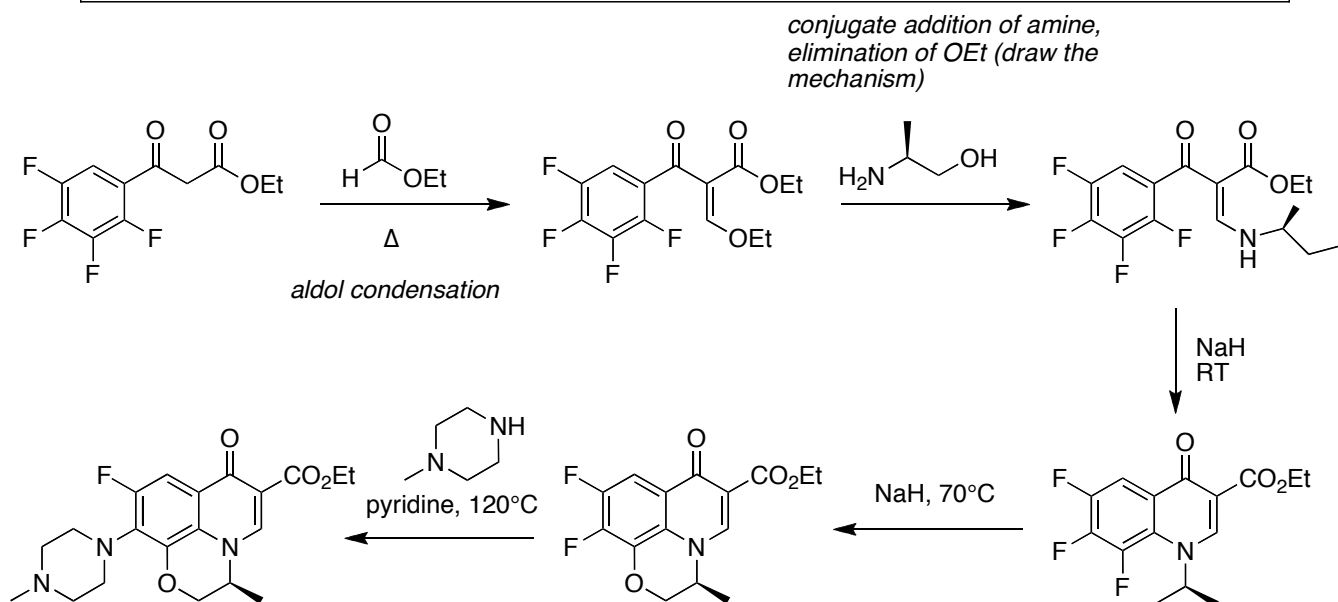
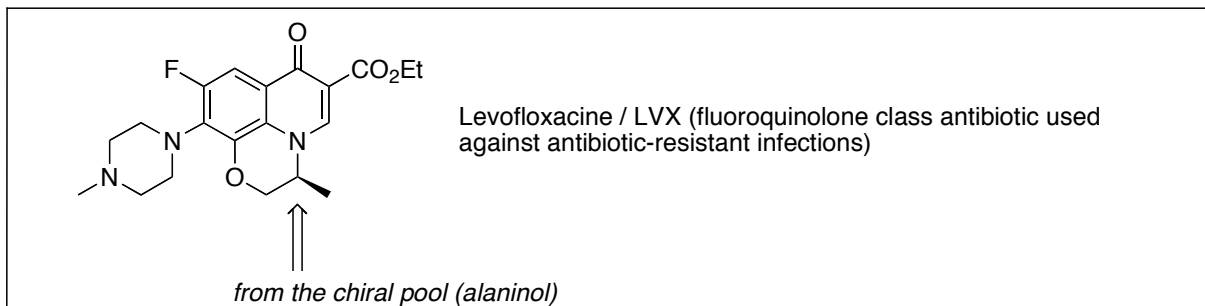


weak base for selective
deprotonation of phenol

DIC, Et₃N,

Evans' chiral auxiliary installation, use
for directing an alkylation, and removal





Three consecutive nuc. arom. substitutions, each under stronger conditions as the ring becomes less and less electrophilic due to decreasing numbers of electron withdrawing F atoms.

