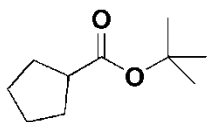
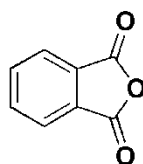
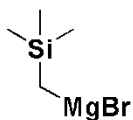
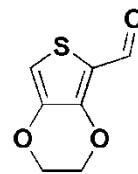
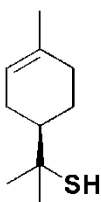
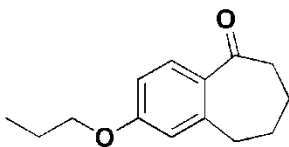
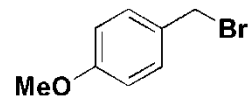
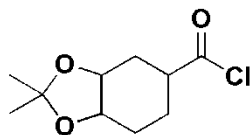
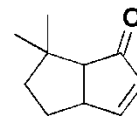
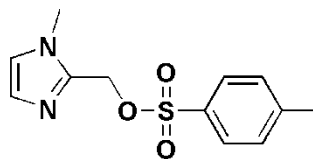
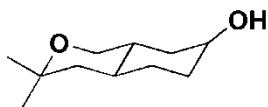
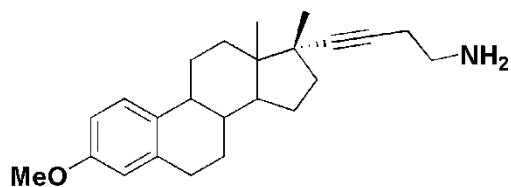


PS #3 Practice Questions – Nucleophiles and Electrophiles in the Synthesis of Amides and Esters

Part I. Circle the most nucleophilic or electrophilic centre in the following molecules and state whether the reactive site you have chosen is nucleophilic or electrophilic.



KCN



(Tos)

Part II. Fill in the boxes with the appropriate product or reagent.

