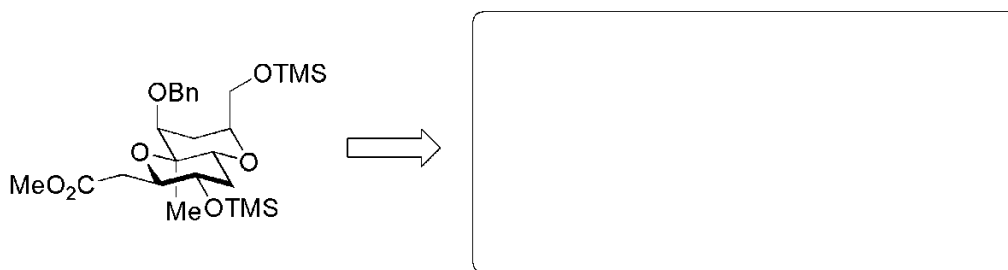
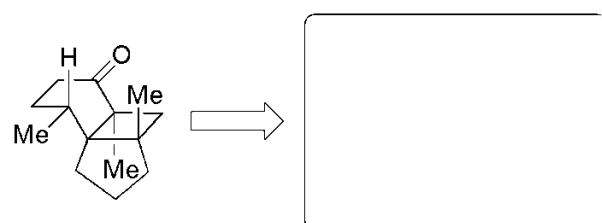
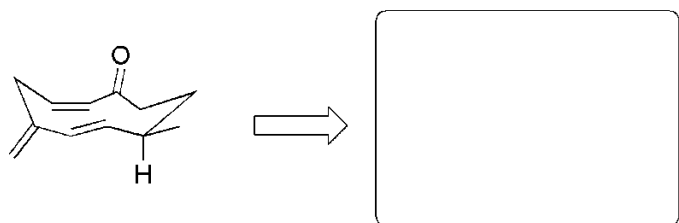
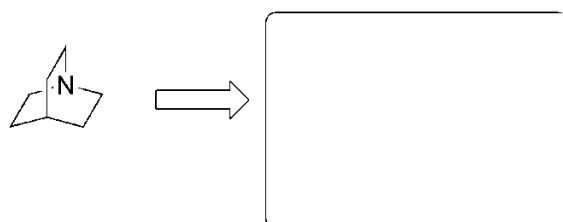
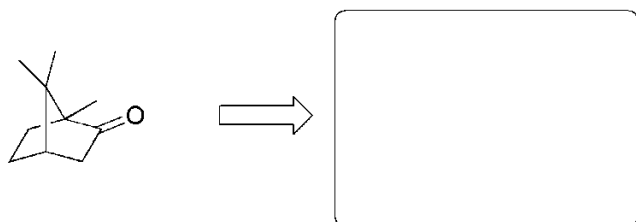
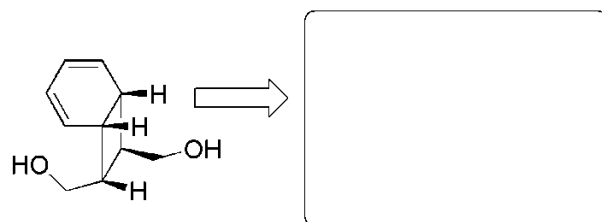
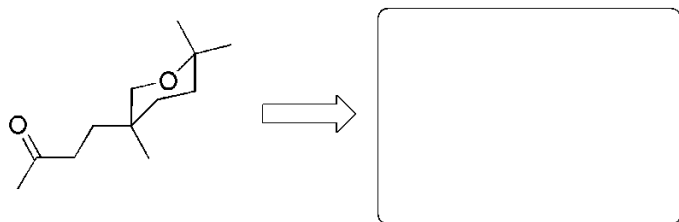
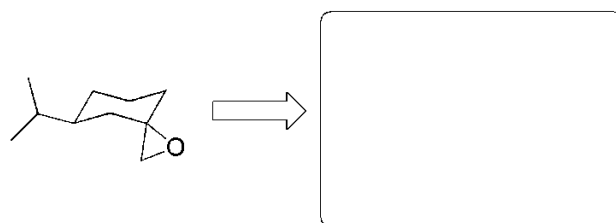
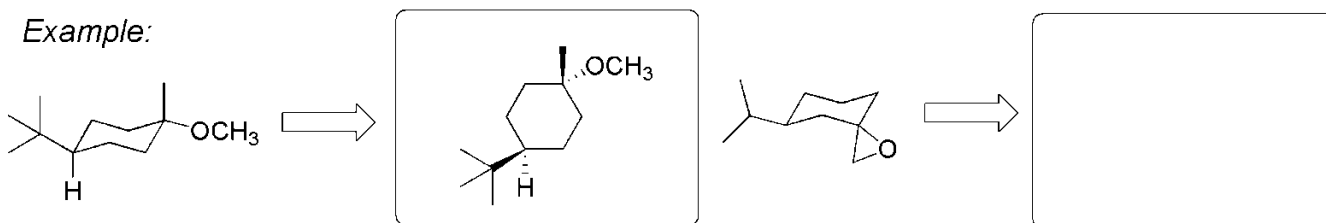


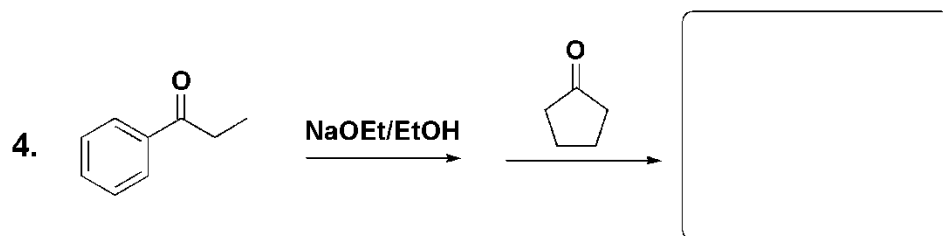
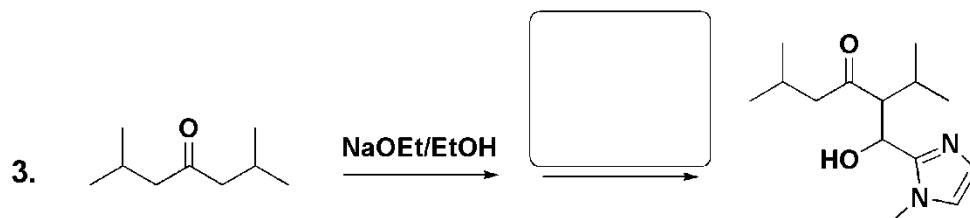
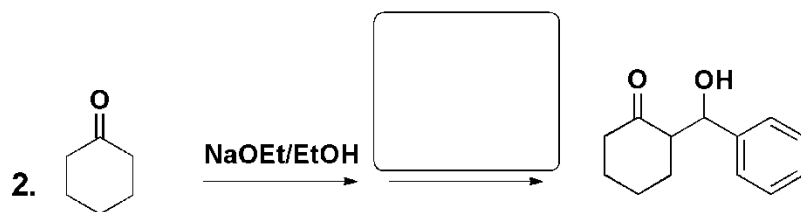
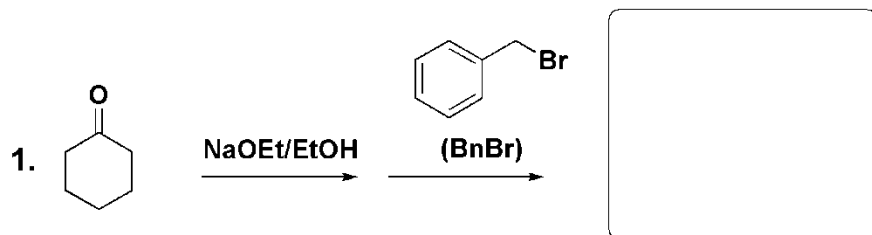
PS #4 Practice Questions – Unraveling 3D Molecules and a Reintroduction to Enolate Chemistry

Part I. Understanding the 3D representations of molecules is important. To get some practice with this, please render the following 3D representations as flat “roadkill” representations.

Example:



Part II. All of the following reactions involve enolate formation. Fill in the boxes with the appropriate product or reagent.



Part II. Ctnd...

