

Banner Tutorial

Sunpreet Jassal

ssjassal@uvic.ca

(prefix subject with “[hist481]”)

Feb 11, 2008

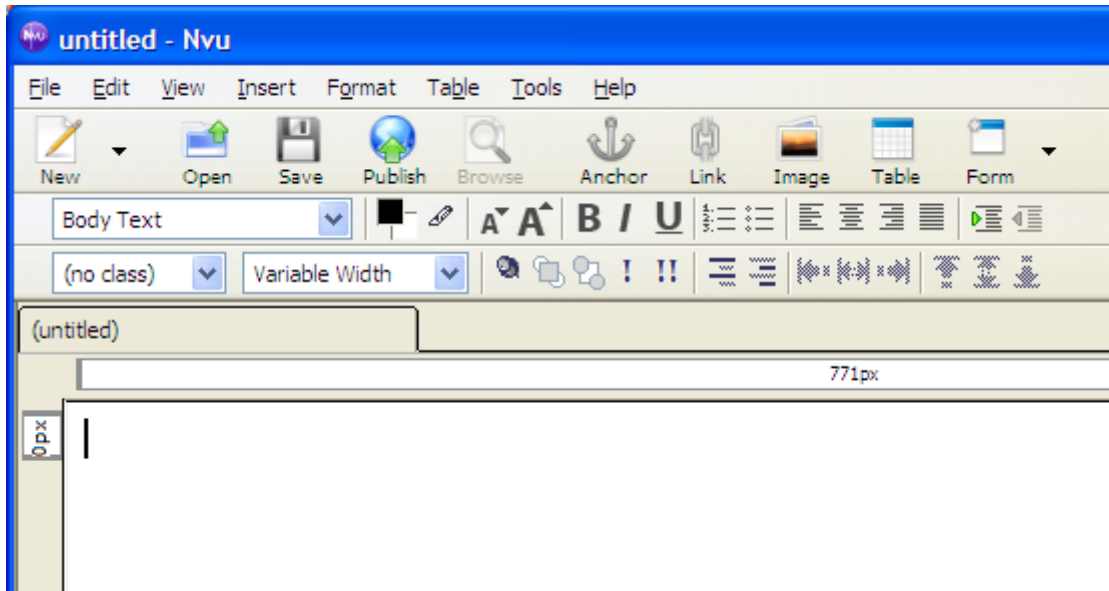
HIST 481

Overview

- Creating a blank web page
- Adding text and headings
- Adding a banner image
- Changing image properties
- Adding styles and formatting
- Exercise
- Testing the web page
- Centering body content
- Recap
- Questions

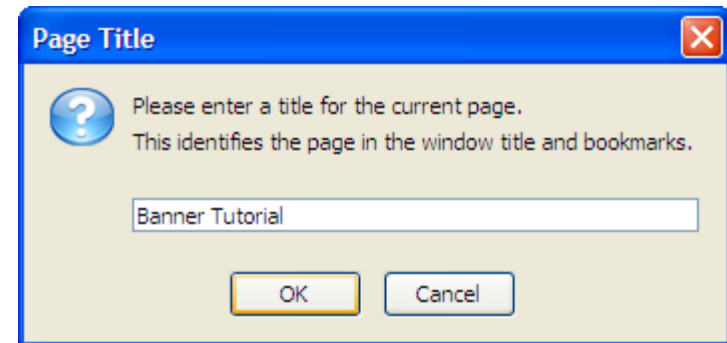
Creating a blank web page

1) Start NVU.

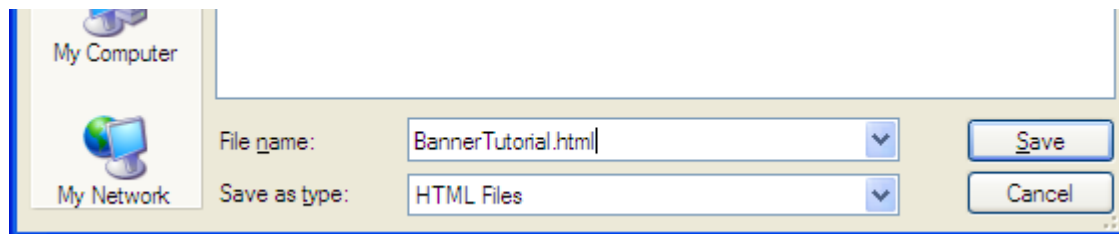


2) Save the newly-created empty page.

3) Give "Banner Tutorial" title.

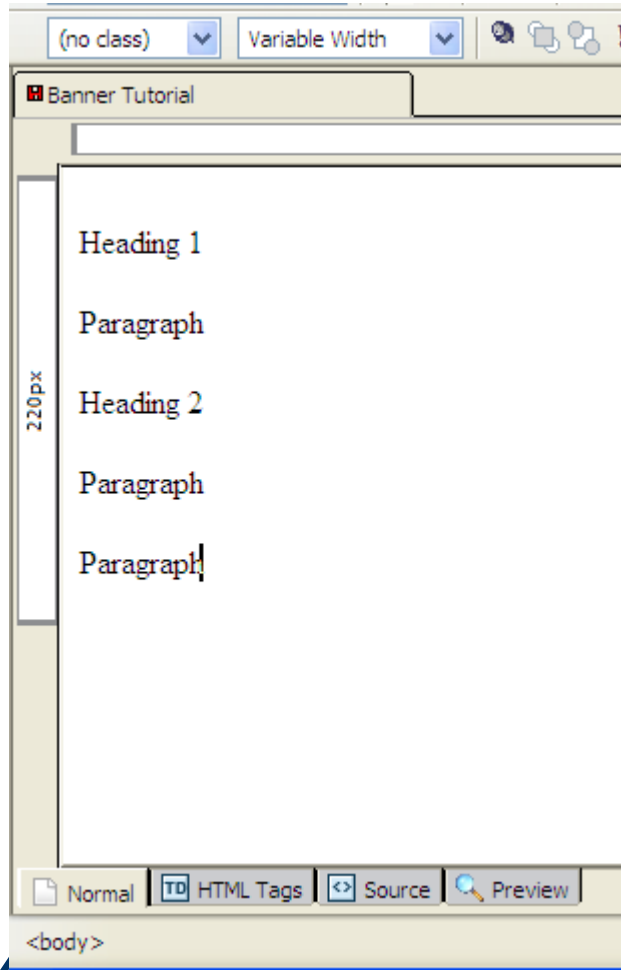


4) Save as "BannerTutorial.html".

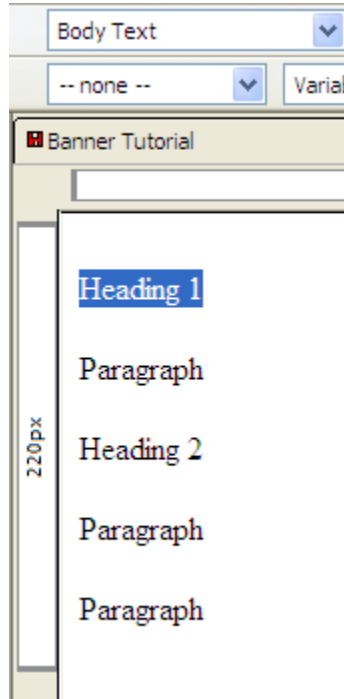


Adding text and headings

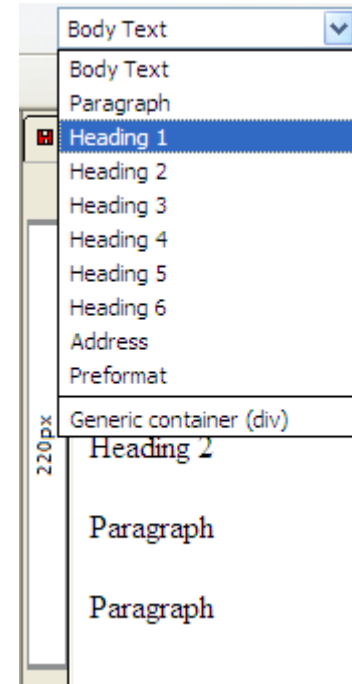
1) Type some text.



2) Select heading.



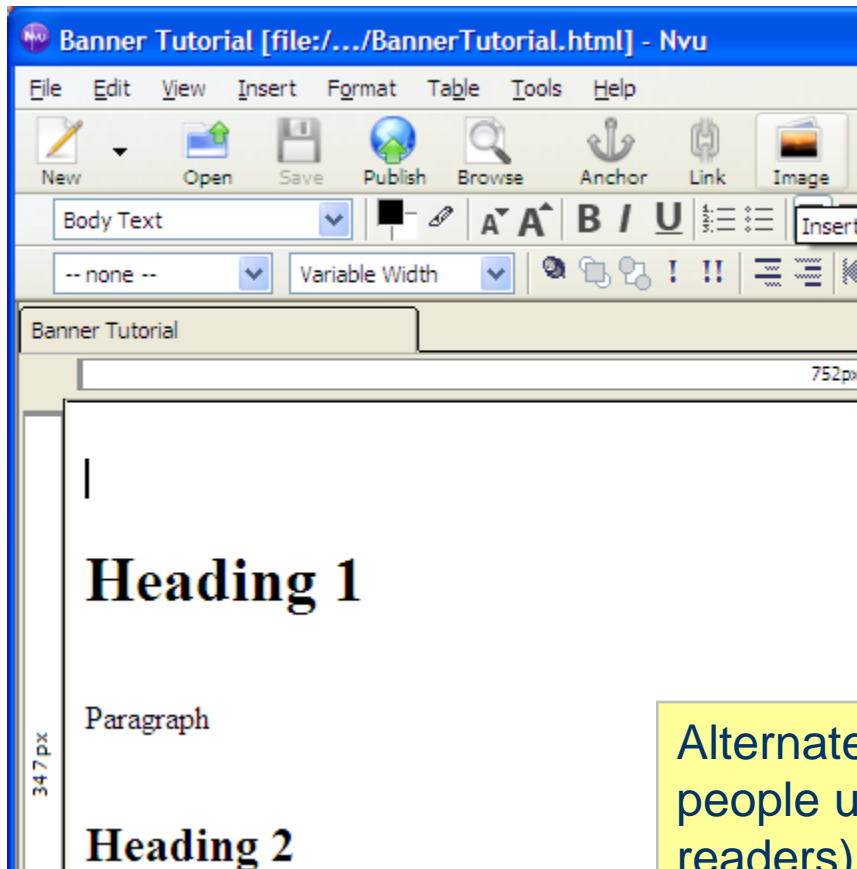
3) Assign "Heading 1" style rule.



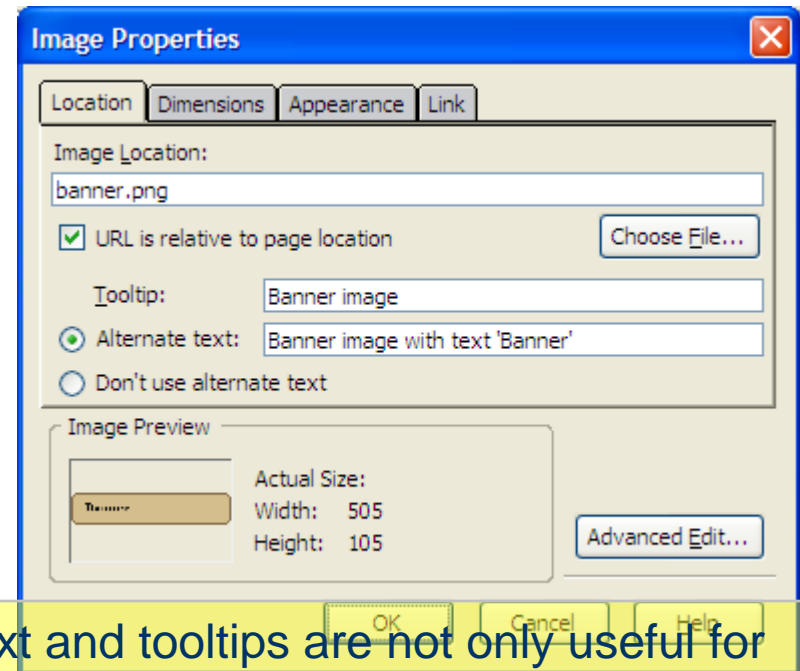
Heading 1 to 6 emphasize the importance of headings. For instance, the title of a paper is heading 1, and a section title is heading 2, subsection title is heading 3 and so on.

Adding a banner image

1) Place cursor where you would like to insert the image, then click on “Image” button.



2) Download image from <http://web.uvic.ca/~ssjassal/hist481/banner.png>, and choose it from “Choose File”. Then provide a tooltip and an alternate text.

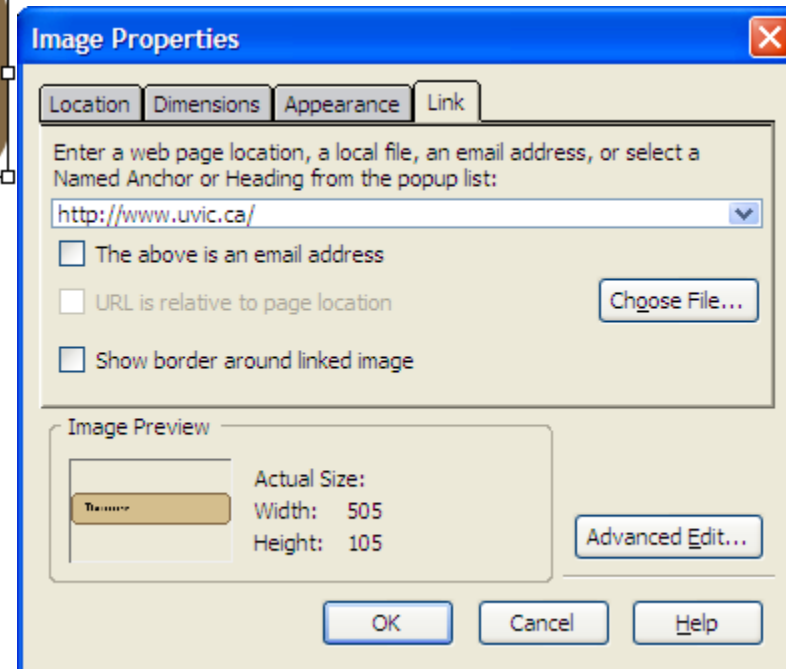


Alternate text and tooltips are not only useful for people using assistive technologies (such as screen readers) but also for search engines which use them to extract meaning out of the image and to rank your web page in search results.

Changing image properties

1) Right-click the image and select “Image Properties ...”

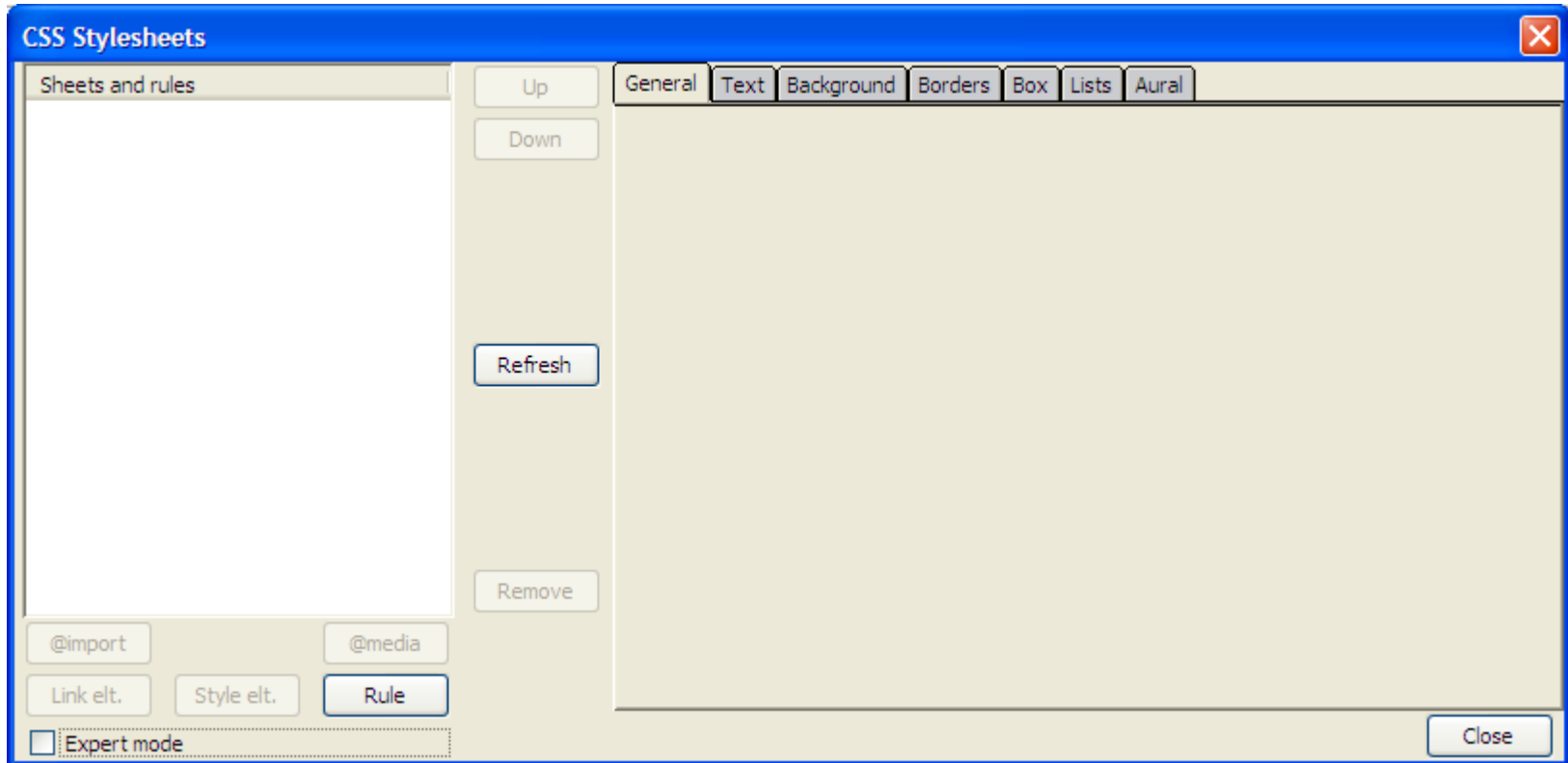
2) Click “Link” tab, and type in “http://www.uvic.ca/” as the web page location.



Adding styles and formatting

Change the web page background

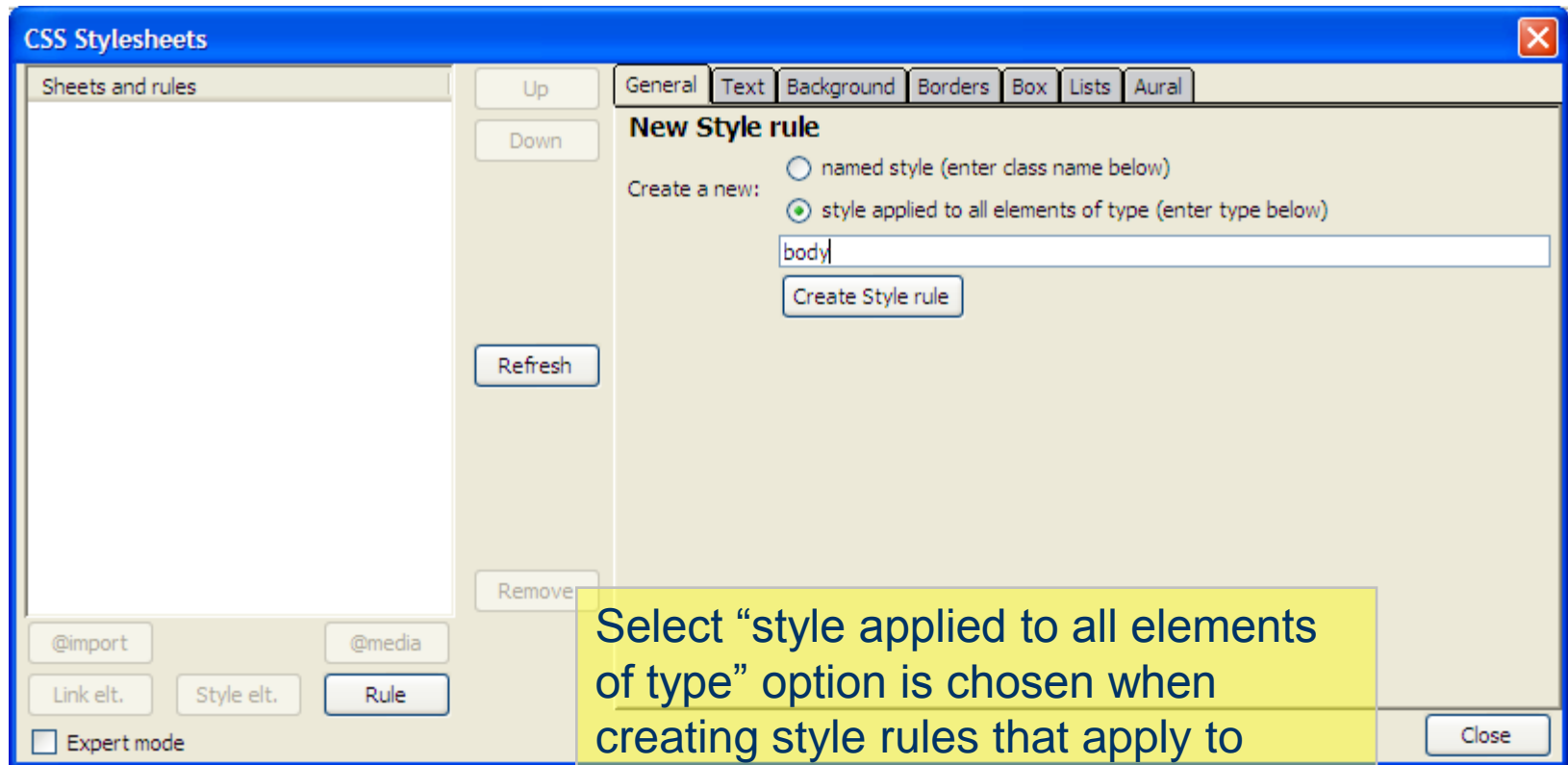
1) Open CSS Editor from the Tools menu, and you will see the following dialog.



We have not created any style rules yet; so the editor is empty. However, web browsers typically associate default styles, which is why our heading was larger in size than other text.

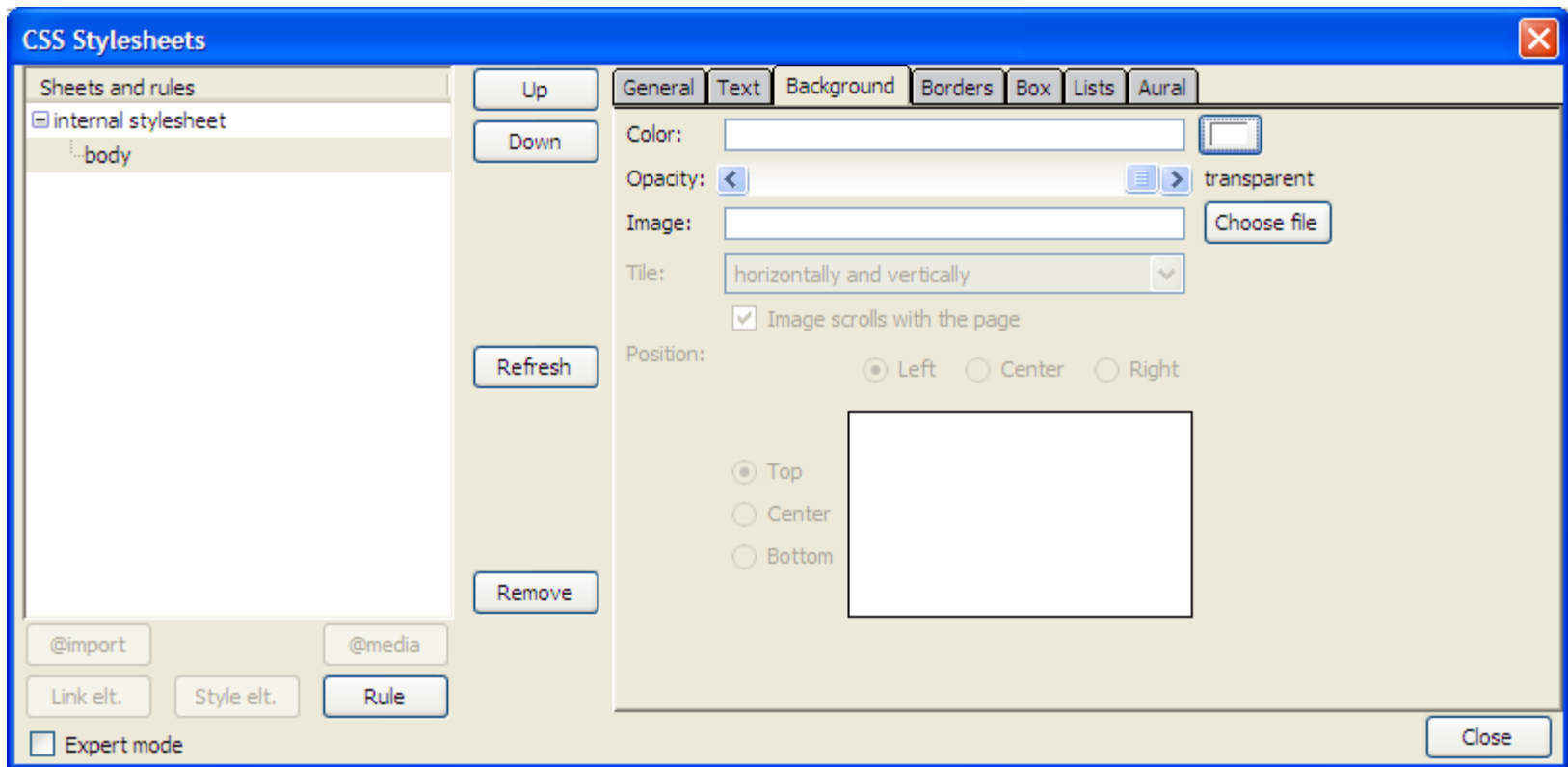
Adding styles and formatting

2) Uncheck “Expert Mode” (for the time being), and click on “Rule” to add a new rule for **body** element as we want to change the background color of the web page. Select “style applied to all elements of type” option.

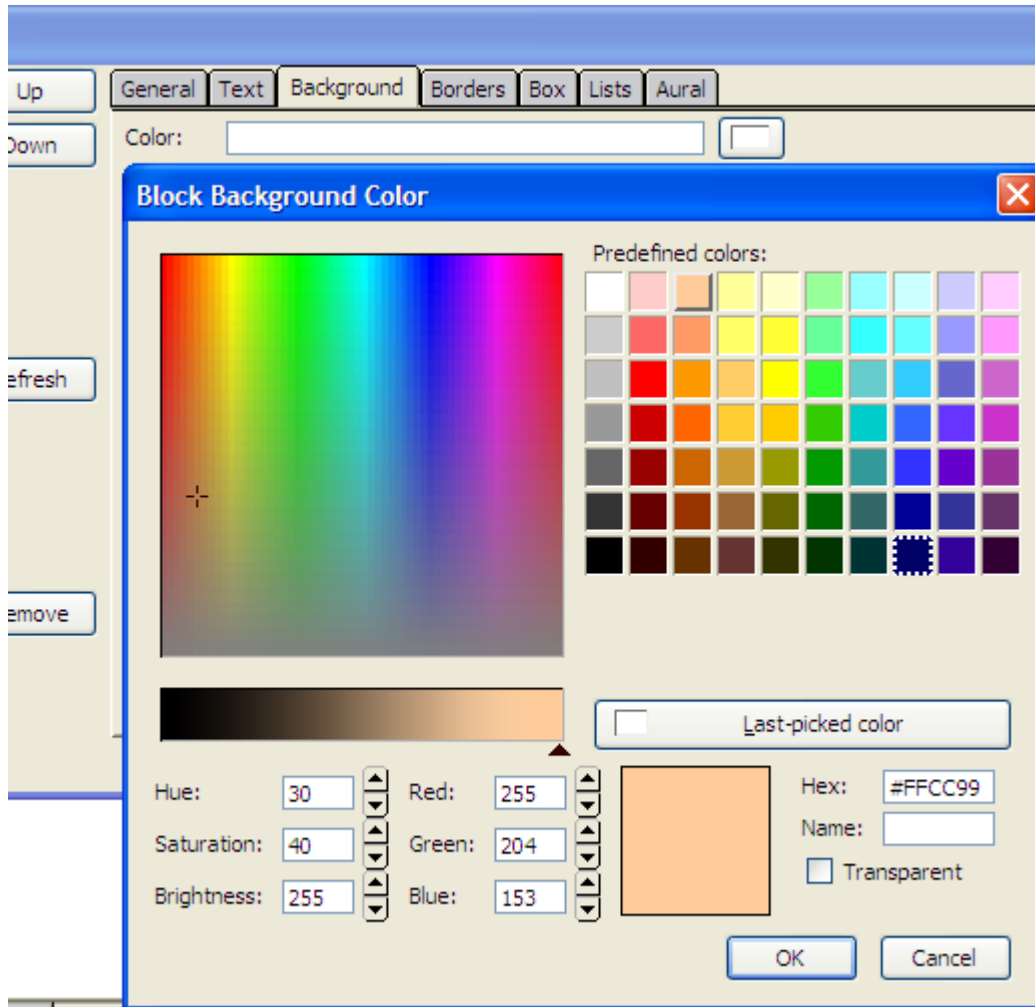


Adding styles and formatting

3) After creating a new style rule for body, select the “Background” tab to change the background color.



Adding styles and formatting



4) Click on the color picker to select the color. Click OK and close the CSS Editor.

Adding styles and formatting

5) After closing the CSS Editor dialog, this is how our page looks:



Exercise

Change the default font family of Heading 1 to sans-serif, and add an underline.

Steps:

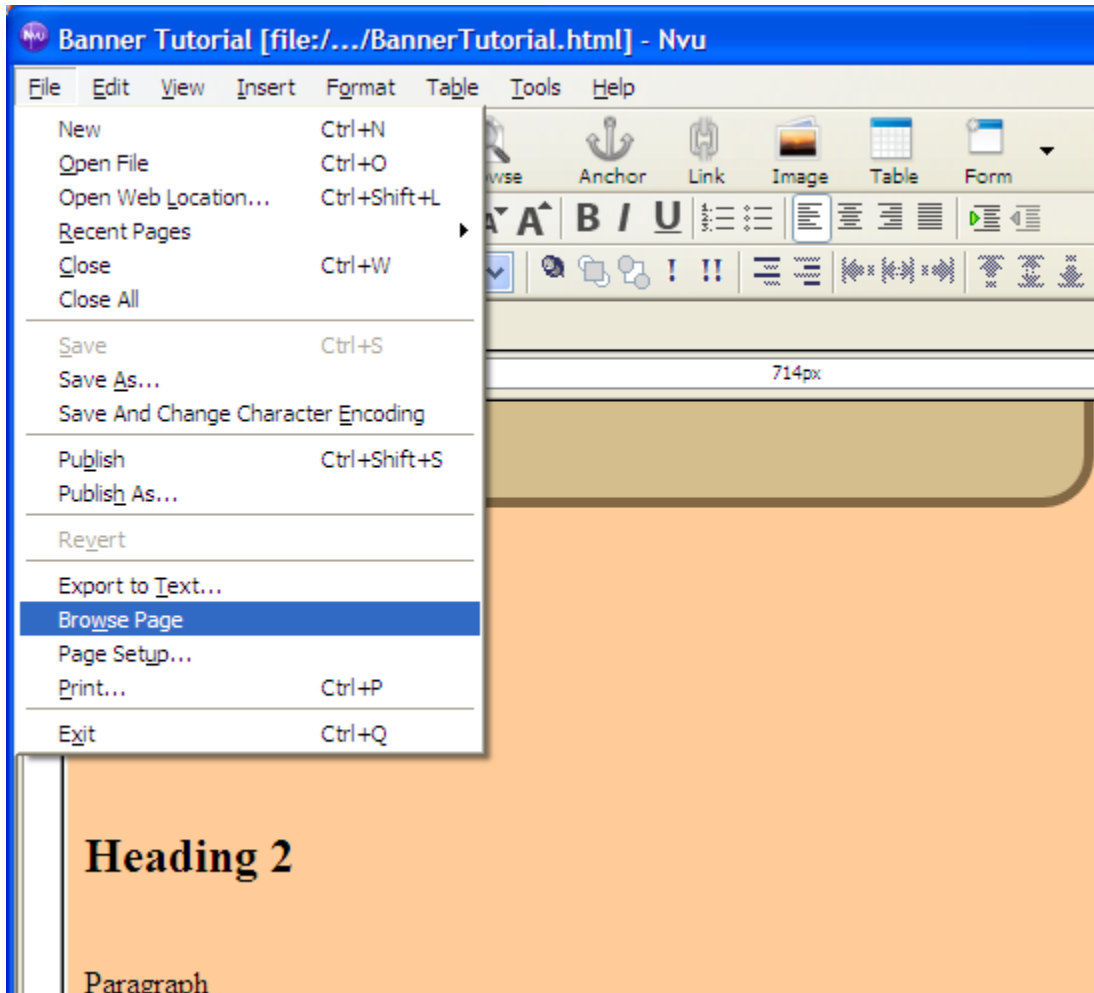
- 1) Open CSS Editor and create a new style “h1”. Predefined HTML elements h1 to h6 correspond to Headings 1 to 6. We must choose the second option: “style applied to all elements of type”.
- 2) Then, under “Text” tab and under “Font Family” section, choose predefined “Arial, Helvetica, sans-serif” font family. Alternatively, if we’d like to specify a particular font, we can choose a custom font family.
- 3) While still in “Text” tab, select “Underline” under “Text Decorations.” Note that the preview also gets updated, which is convenient.
- 4) Click “Close” to validate the style rule, and see your web page updated.
- 5) Save your file.

Exercise

The result should resemble the following:



Testing the web page

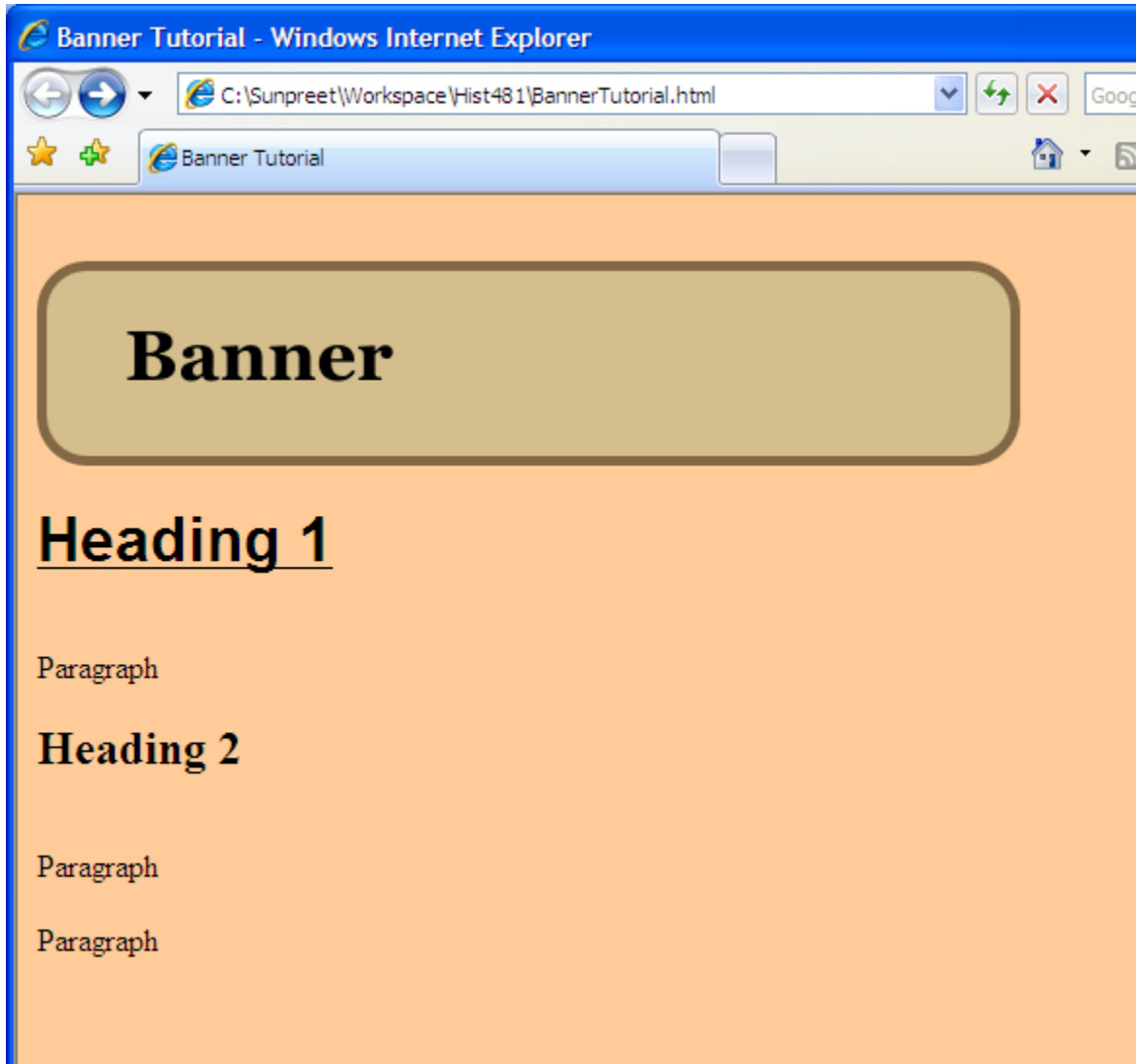


Save the web page.

Then browse page to open the default web browser on your computer to open the web page.

You can also use the Browse button that appears in the toolbar.

Testing the web page



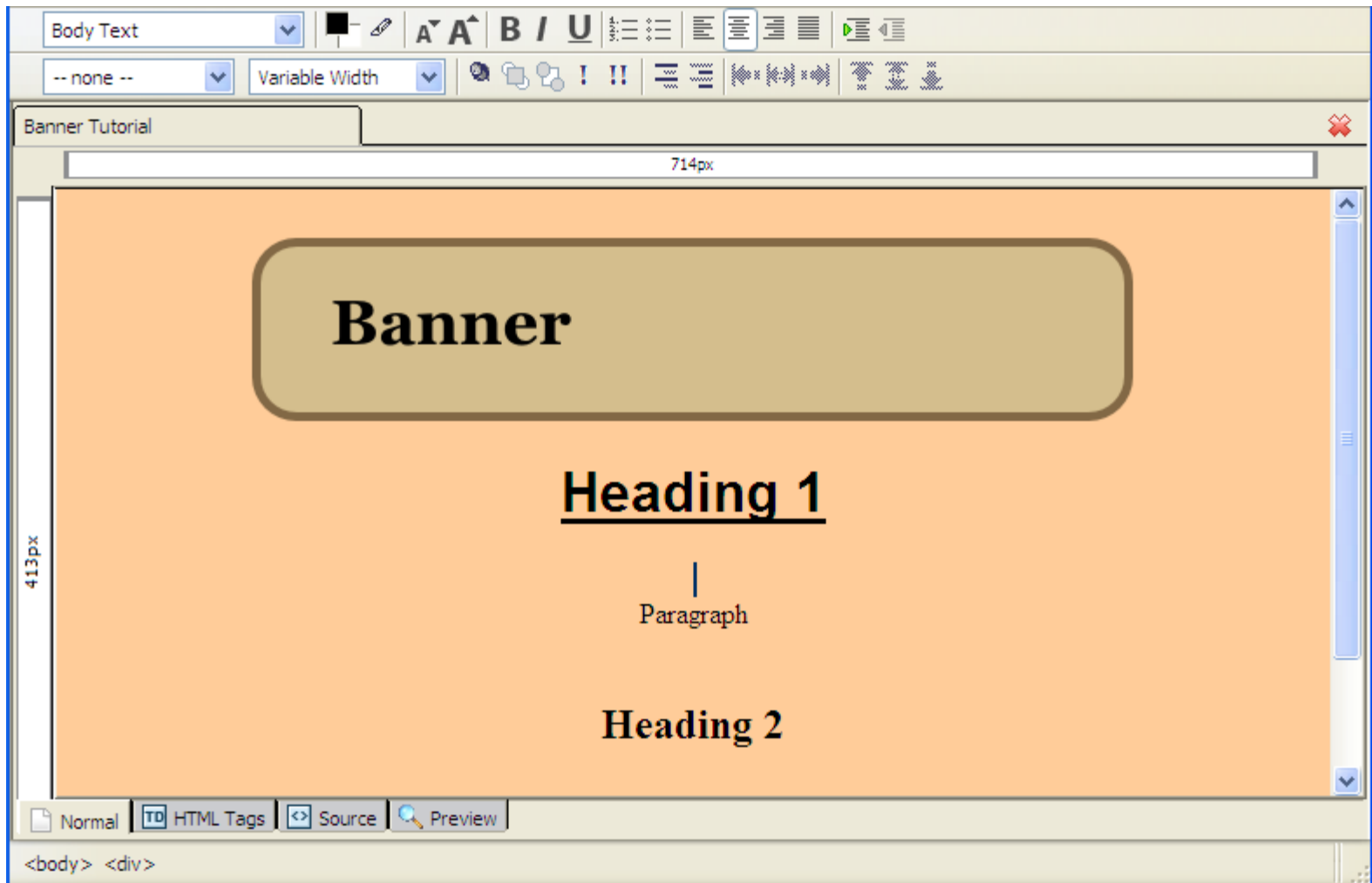
This is how it should look in Internet Explorer 7.

You can copy the URL that appears in the address bar and paste in the address bar of another browser to test your web page in that browser.

You must Refresh/Reload the web page in your web browser to see updates if you make changes to that page in Nvu while keeping the web browser window open. Also, save the page before switching to the web browser.

Centering body content

Most of the content elements are easy to center using the “Align Center” button in the toolbar, but we cannot center the body content this way. We get:



Centering body content

1) Switch to “Source” mode, and add lines 19 and 33 after opening body tag and before closing body tag, respectively.

i.e. add “<div id=“container”>” after “<body>”, and add “</div>” before “</body>”.

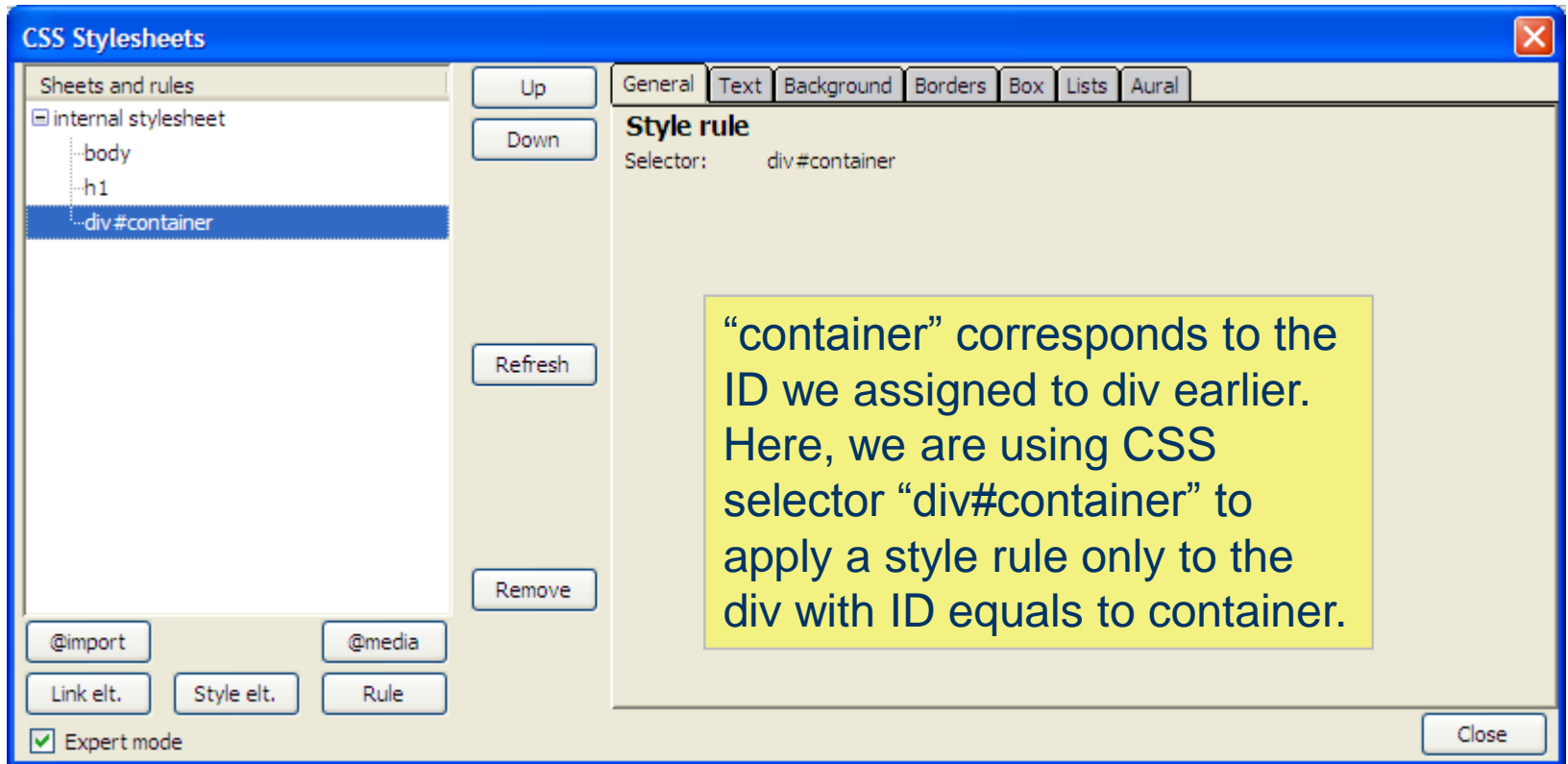
```
16. </style>
17. </head>
18. <body>
19. <div id="container">
20. <br>
21. <a href="http://www.uvic.ca/"></a><br>
24. <h1><span class="">Heading 1</span></h1>
25. <br>
26. Paragraph<br>
27. <br>
28. <h2>Heading 2</h2>
29. <br>
30. Paragraph<br>
31. <br>
32. Paragraph<br>
33. </div>
34. </body>
35. </html>
```

Div element defines a division/section in a web page. ID attribute allows use to uniquely identify that element. Note that only one element on a web page can have a given ID. We use class attribute when we want to “group” elements.

Centering body content

2) Go back to “Normal” mode and open the CSS Editor.

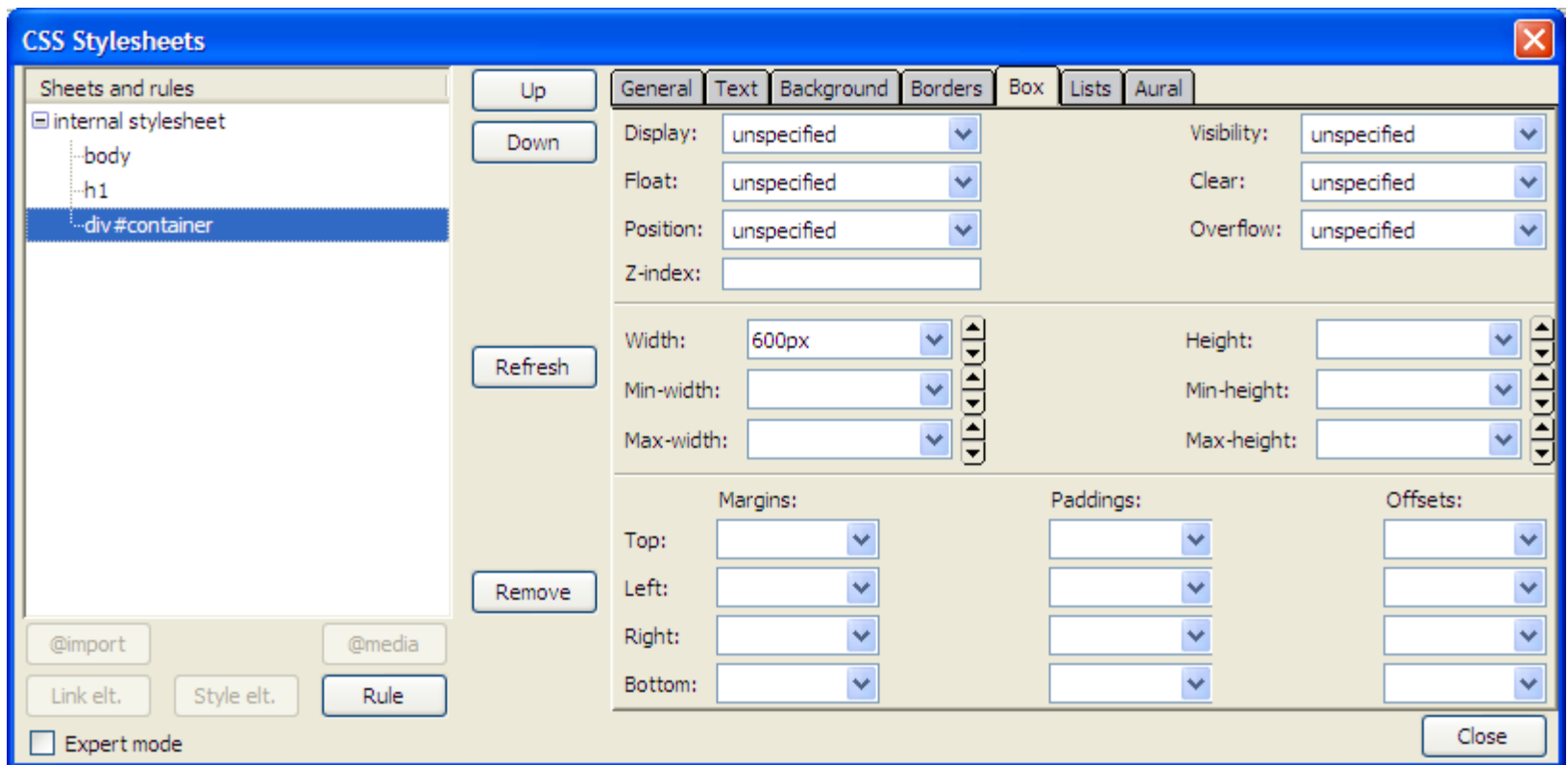
3) Add a new style rule **div#container**. Div is a predefined HTML element, so select “style applied to all elements of type” option.



#container should suffice to identify, but I like to prefix it with div to make it clear.

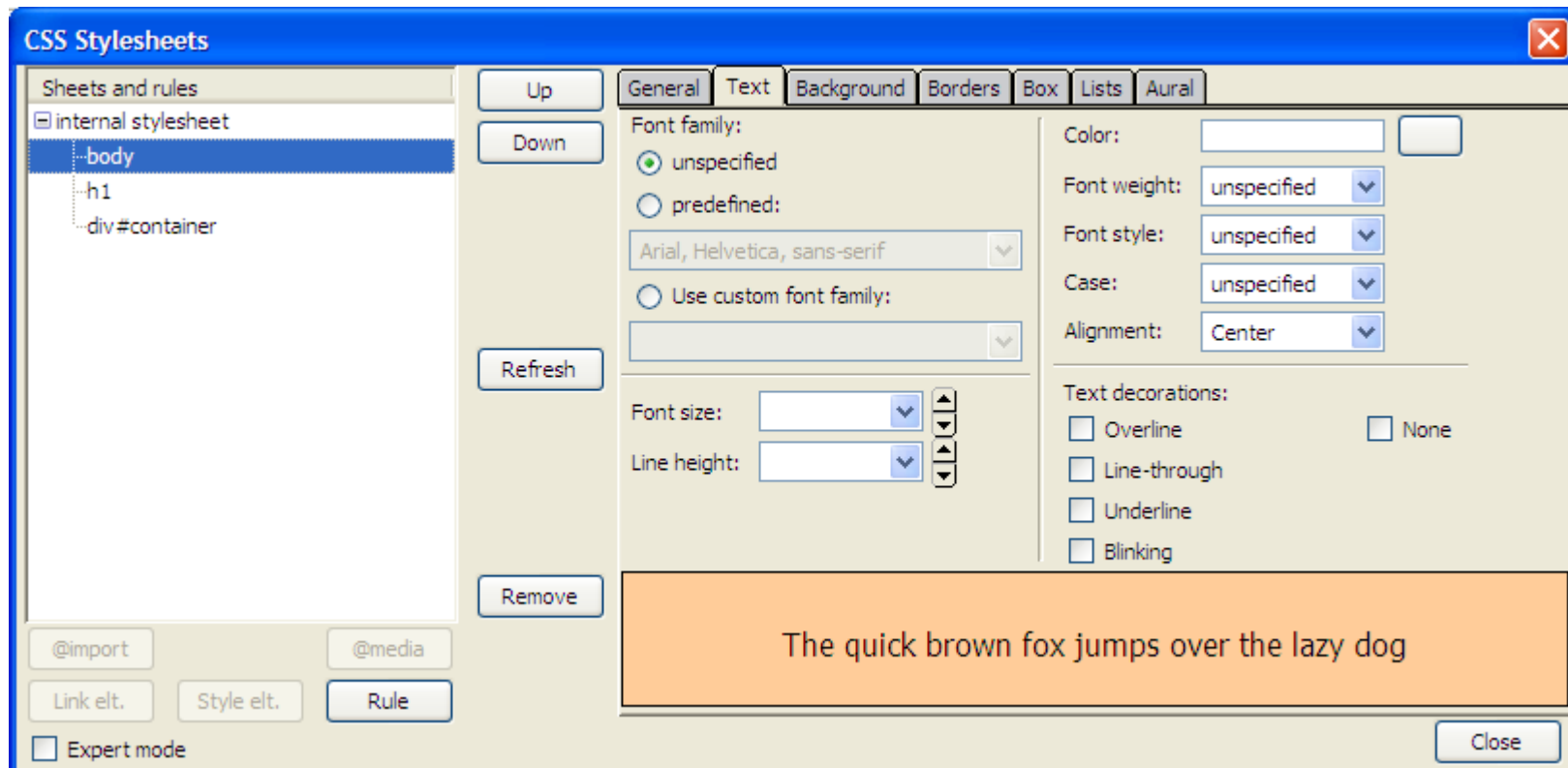
Centering body content

4) Select “Box” tab and add a width of 600 pixels.



Centering body content

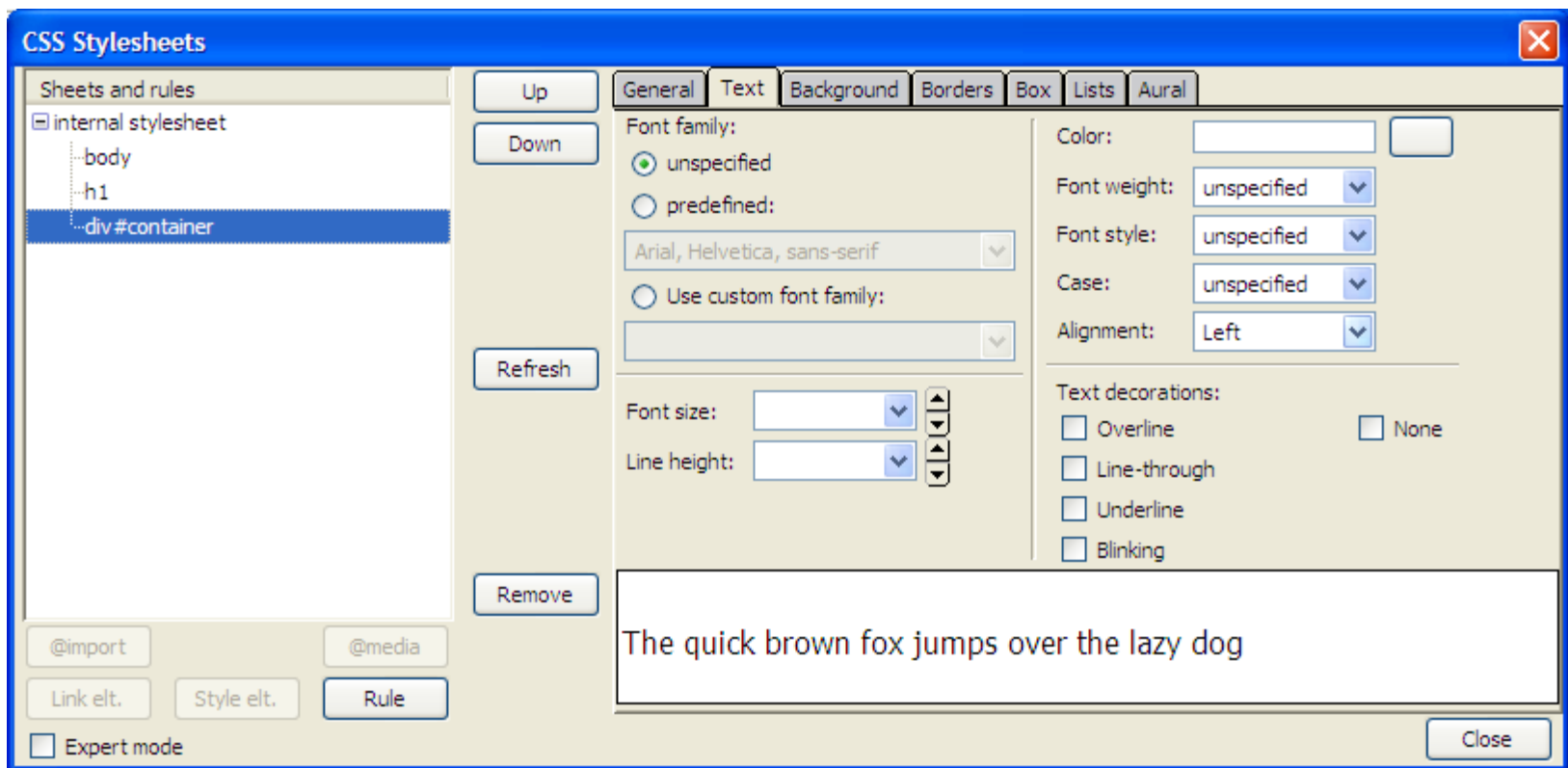
5) Select “Text” tab. This time select **body** as element and change alignment of body to center.



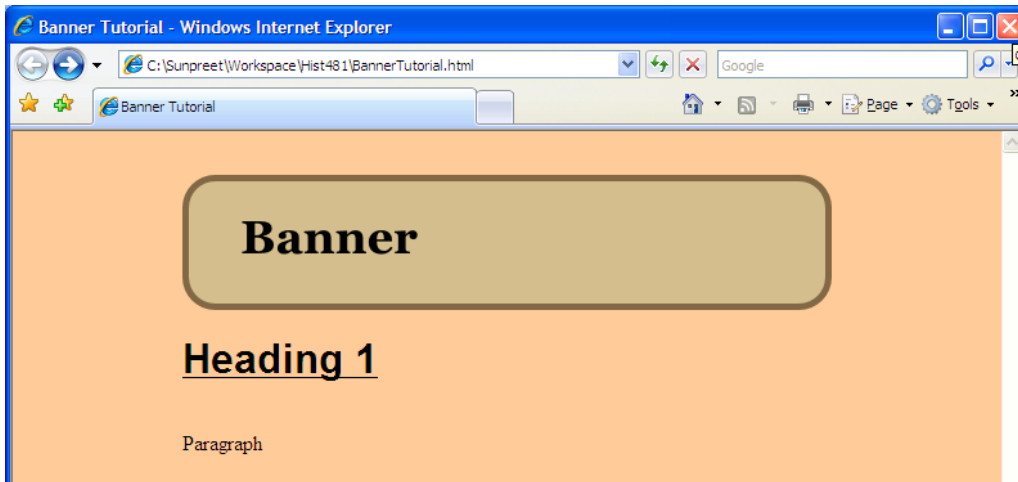
We want to center body’s content so that our div container appears in the center, but we want the text inside this div to be left-aligned. Therefore, in the next step, we change alignment of the div container to left.

Centering body content

- 6) Change alignment of **div#container** to left so that the entire web page text does not center with the change of body alignment.
- 7) Close the dialog to validate the styles. Then browse the page in a web browser.

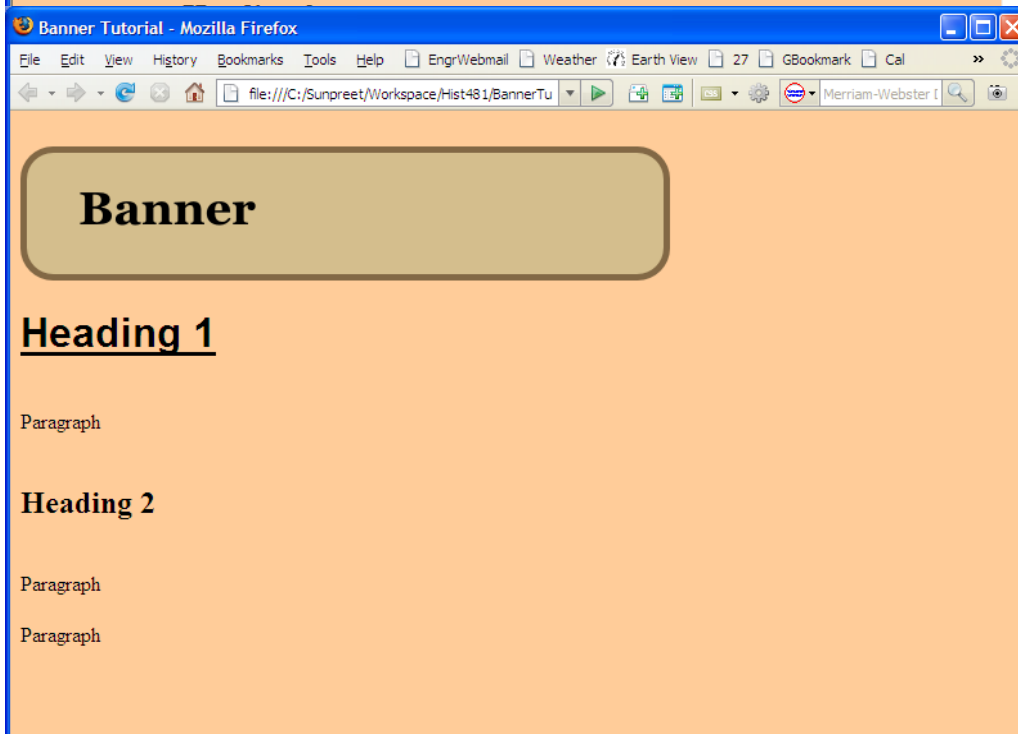


Centering body content



This is how the page renders in Internet Explorer 7 (non-standard behavior)

and

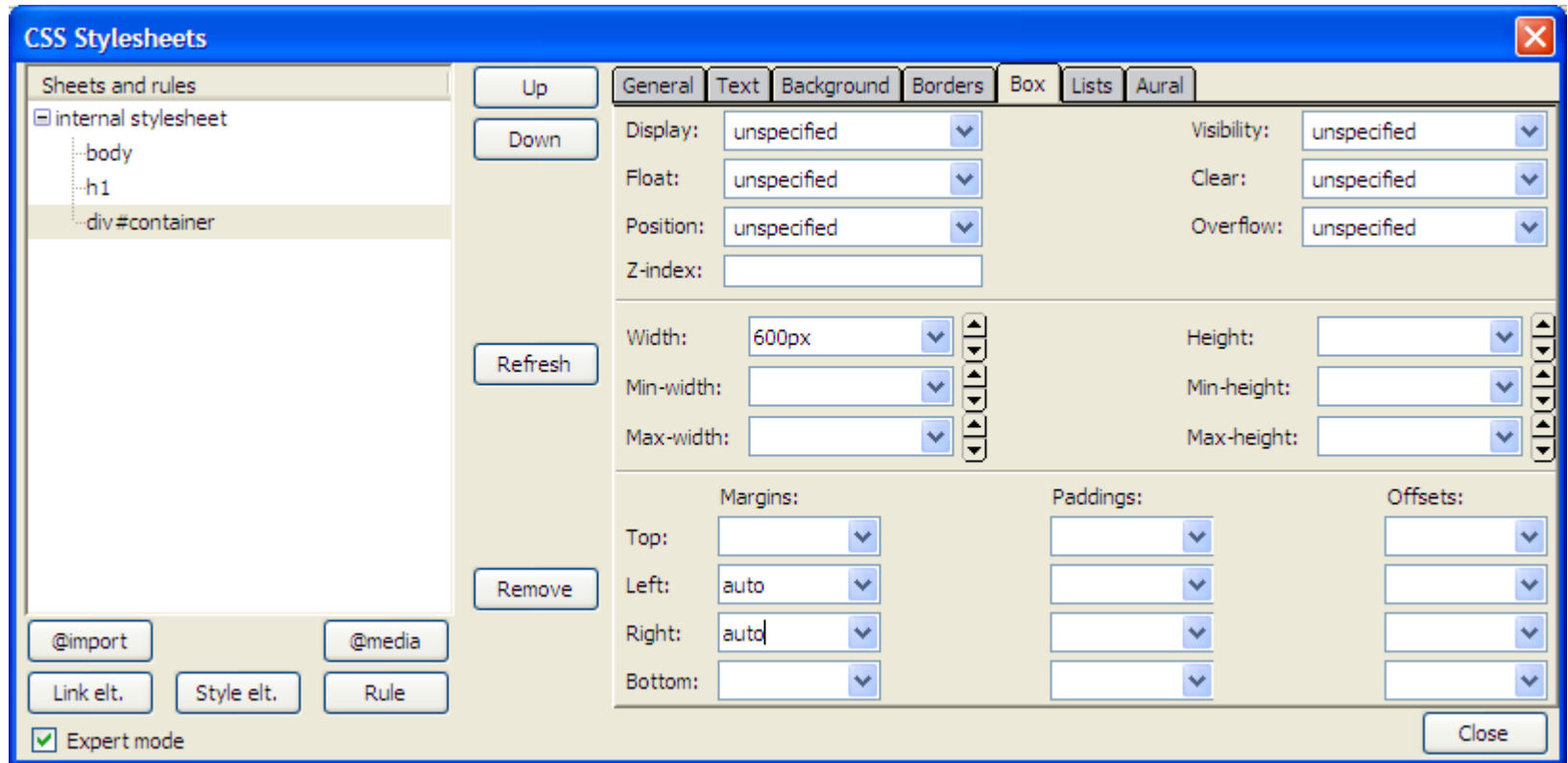


in other web browsers, Firefox, Opera, etc.. (standard behavior)

Yes, the web browsers are not perfect.

Centering body content

To achieve consistent behavior, we set left and right margins of **div#container** to “auto” as shown below. Now we should center our content as desired.



Recap

- We have learned how to
 - create a web page from scratch
 - add text, create headings and formatting them
 - assign style rules to elements using drop-down
 - add a banner image and align it
 - use CSS Editor to add new style rules and modify older ones
 - apply styles to predefined HTML elements (such as body, h1, div)
 - apply styles to elements with a given ID (such as container)
 - test web pages in a web browser

Questions

- Is it important to assign appropriate styles to text? For instance, heading 1 to emphasize very important text, and heading 2 to emphasize less important text.
- How do we apply a style to a class of elements that are not predefined? Say, we would like to make all Figure references bold.
- Does naming convention matter? Is “#container” ID preferable over “#id1” or “#id2” ...?