

Building a kiln in our field and samples of Gillian's pots

<https://sites.google.com/view/mackiefamily/home>



Kiln was constructed of tongue-and-groove firebricks originating as firebox liners of steam locomotives.

Rachel



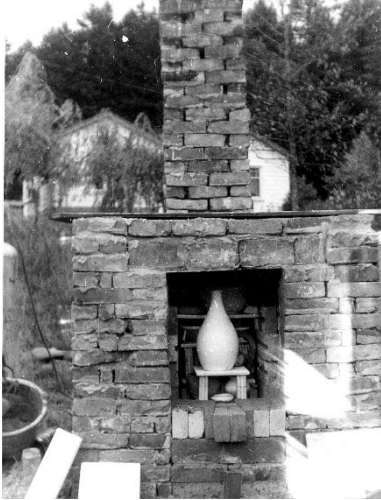
Richard & Al



Richard building the arch



Tina applying the
outer cladding of
common red bricks.
Propane cylinder and
tiger torch.



Loading, firing and unloading, helped by Quentin













George made the plates on this page, Gill decorated them



We made this bowl in the wood-fired kiln I built at Sugar Lake.



Congratulations Gill!